



MODULAR SPECIFICATIONS



Style Number.....GT111
 Style Name Starting Point Modular
 Collection..... Fresh Observations
 Construction tufted
 Surface Texture..... level patterned loop
 Gauge 5/64" (50.4/10 cm)
 Density..... 7,043
 Weight Density..... 126,774
 Sustainable Content ... Contains a minimum 35% pre-consumer recycled content by total weight
 Stitches Per Inch..... 8.4 per inch (33.07/10 cm)
 Protective Treatment... Sentry Plus
 Finished Pile Thickness... .092" avg (2.34 mm)
 Dye Method..... solution dyed/space dyed
 Backing Material..... EcoFlex ICT
 Fiber Type Duracolor® Premium Nylon
 Fiber Technology Duracolor® by LEES Stain Resistant System. Passes GSA requirements for permanent stain resistant carpet.
 Face Weight..... 18 oz/yd2 (610.38 gm/m2)
 Size/Width 24" x 24" (60.9 cm x 60.9 cm)
 Installation Method.... vertical ashlar, quarter turn
 IAQ Green Label Plus.. 1098
 CRI Rating..... Severe Traffic
 Pattern Repeat Not Applicable
 Warranties Lifetime Limited Modular Warranty, Lifetime Duracolor Stain Warranty, Lifetime Static



157
ESSENTIAL



388
CORE



584
ORIGIN



586
SOURCE



637
BRINK



648
NEW BEGINNING



661
NUCLEUS



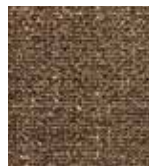
689
RISE



728
ONSET



738
ROOT



867
INCEPTION



869
FUNDAMENTAL



873
INITIATION



894
FIRST STEP



898
DAWNING



934
EMERGENCE



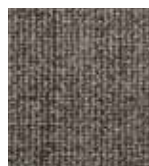
953
ALPHA



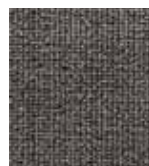
959
KICK OFF



966
EMBARK



978
LAUNCH



979
SQUARE ONE



984
CREATION



985
PREFACE



999
VERGE