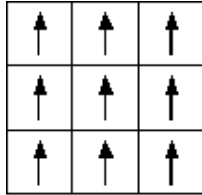


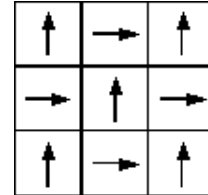
# Lees PermaLink Adhesive Tape System

## Installation Of Carpet Tiles Over Existing Carpet

### Installation Formats



**Monolithic**



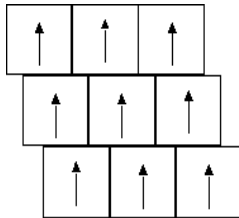
**Quarter-Turn**

Artstone III  
 Artview  
 Aspire  
 Attribute  
 Buildingworks  
 Colorbridge (borders only)  
 DataGuard I  
 Discovery  
 Faculty Classics  
 Faculty IV  
 FireWorks  
 Groundwork  
 Gulfstream II

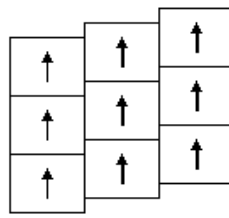
Initiative II  
 InTown  
 Invite  
 Lineage  
 MBH Collection  
 MetallicField  
 Notion  
 Paradigm  
 Place  
 Second City  
 StoneField  
 Venue  
 Workforce

Architectural Rhythms  
 \* ArtLink  
 Bottega  
 C.Edge  
 Connecting Stripes  
 D.Code  
 \* DataGuard II  
 DataGuard III  
 \* DesignConnect  
 \* DesignScene  
 FirstStep  
 \* Ground Strata

Heartland  
 \* HorsePower  
 MetallicGrid  
 PhotoFinish  
 \* Random Path  
 SisalTile II  
 \* StepUp  
 Structural Logic  
 T.Setter  
 \* The Field  
 The Groove  
 \* WovenCircuit



**Brick Ashlar, 3-Step 8-Inch Offset**



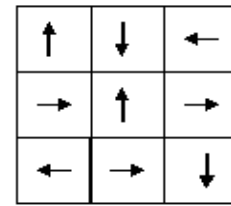
**Step 8-Inch Offset**

**Random**

**(6-Inch Offset for 18" x 18" Tiles) (6-Inch Offset for 18" x 18" Tiles)**

Cantera  
 \* DataGuard II  
 Emerging Lights  
 Fireworks  
 \* Flamestitch II  
 Initiative II  
 Moontrail II  
 \* StepUp  
 \* WovenCircuit

\* ArtLink  
 Cycles  
 \* DesignConnect  
 \* DesignScene  
 \* Ground Strata  
 Haven  
 \* HorsePower  
 \* The Field  
 Vitral



**Vertical Ashlar, 3-Step**

\* ArtLink  
 \* DesignScene  
 \* Flamestitch II  
 \* MetroTek II  
 \* Random Path

\* These products may be installed using more than one installation format depending on the look that the end user or designer wishes to achieve. Please review the product list under each of the above formats and consult job specifications or the end user to determine which installation format should be used for a particular project. If you have any questions about any of the installation formats, please contact Lees Technical Service at 1-800-443-2241 for more information.

## Ashlar Format

**NOTE:** To aid the installer in achieving these patterns, modules are printed with directional markers on the back.

You may choose to offset any of Lees carpet tiles in the brick or vertical ashlar patterns if you observe a line-on-line or dark-on-dark effect in the installation or if the pattern is skewing. The ashlar installation methods are also desirable with carpet tiles that have a high contrasting pattern. For these strong patterns, especially in large open areas not covered by furniture or in corridors with runs greater than 50 feet, **the finished carpet installation may have a more pleasing appearance if the brick or vertical ashlar installation method is employed.** If you're unsure, dry lay an open area before installation to determine the best method for the selected carpet tile.

## Random Format

**All arrows on the tiles must be turned in different directions.**

Although there is no specific directionality that the installer must follow, as in the monolithic, quarter-turn, or ashlar methods, products specified "Random" *cannot* be installed with the arrows running in the same direction.

## Condition of Existing Floor

- Lees PermaLink adhesive tape system can be installed over any existing direct glue down carpet, whether loop pile, cut pile, cut & loop, or attached cushion. PermaLink can also be installed over vinyl-back carpet tiles that have been installed utilizing a full-spread application of adhesive. Lees does not recommend using PermaLink over carpet installed over separate cushion, either double-stick or stretch-in (tackless).
- The floor and room temperature should remain a minimum of 65° F and a maximum of 95° F for 24 hours before installation.
- Store the carpet at 65° F to 95° F on site 24 to 48 hours before installation. Keep the carpet in the same room under constant temperature and humidity.
- Do not install over carpet that has had subfloor moisture problems or signs of alkalinity (calcium chloride reading in excess of 5 pounds). These types of carpet are usually loose and pulling up from the subfloor. The plastic sheeting of the adhesive tape has the potential to accumulate moisture just like a vinyl floor. PermaLink is not recommended for use in buildings prone to flooding.
- **Do not install over loose soil. Remove grease or oil prior to installation.** Normal stains need not be cleaned (e.g., tea, coffee), but **use a good commercial vacuum prior to installation.**
- The existing carpet surface must be well adhered. If the existing floor covering is damaged or worn, in local areas cut open and glue loose sections or holes, or glue in a piece of covering of the same thickness. Remedy the following problems before proceeding:
  - **Loose seams** – Secure the area using duct tape over the seam before installation of the tape.

**NOTE:** Remember, if you install the tape on a surface that is not well-adhered to the substrate, it could jeopardize the new carpet installation if that surface releases from the underlying substrate.

**NOTE:** Imperfections in the existing floor will telegraph. Correct any ripples or other height differences before installation of the tape.

- **Ripples in the carpet** – Occasional ripples (under 1-foot in length) must be trimmed of excess carpet. Ripples over 1-foot in length must be cut open, trimmed of excess carpet, and re-glued using a cove base adhesive.
- **Delaminated areas** – Cut open any areas that have delaminated, remove excess carpet, then re-glue the section with cove base adhesive.
- **Height transitions** – Pull the pull back the piece of carpet that has the lower pile height about two feet. Use either a cement-based patch or the Johnsonite LS40 floor leveler system to bring the lower carpet up enough that when the two pieces of carpet meet, the pile heights are the same.
- **Metal or glass doors** – For doors that do not provide enough clearance for the installation of the tape and new carpet, cut the existing carpet back 4 feet from the door. Use the Johnsonite LS40 leveler system or a cement-based floor patch to level the transition between the existing carpet and the subfloor. Use Lees Squared Pressure Sensitive Adhesive on the bare subfloor.

## Recommended Equipment

- PermaLink Adhesive Tape
- Razor Blade Knife
- Loop Pile Cutter
- Chalkline
- 75-pound roller

## Installation of Tape

1. Install the adhesive tape over the total surface sheet by sheet, keeping a ½-inch separation between sheets with no overlap, until the surface is completely covered. Roll out well.
2. The paper side of the tape must go up. This is a water-based acrylic adhesive for use with the vinyl backing of the carpet tiles.

## Carpet Tile Installation

**NOTE:** In some cases, due to doorways or partitions, the “starting point” is not the center of the room.

1. **Observe dye lot guidelines. Always maintain dye lot integrity. Never indiscriminately mix dye lots.**
2. Each pallet will be identified by a Pallet Sequence Number. Every effort should be made to minimize sequence separation of pallet numbers in a given area.
3. Measure the area to find the best starting point that will utilize a maximum size perimeter tile.
4. After selecting the starting point, snap chalklines that bisect this point at right angles. To achieve a perfect angle, which is critical, form a triangle by measuring 6’ up from the center point. Then measure 8’ out from the center point. Then, find a 10’ angle between these two points. (See Figure 1.)

**NOTE:** To check the installation, 18" x 18" tiles should measure no more than 180 1/4" over ten modules, and 24" x 24" tiles should measure no more than 240 1/4" over ten modules.

5. To make the chalk line mark, remove the protective paper from the tape in this area and make the chalk line mark directly on the tape. In the case of a light surface, make the mark directly on the old surface before rolling out the tape. The mark is then left visible through the tape.
6. Use the chalklines as a guide for lining up the edges of the modules. Using the pyramiding technique, install one quadrant at a time, following the numerical sequence as shown in Figure 2 below.
7. For installing the tiles, only pull as much paper off the tape as is immediately required for laying the tiles.
8. The corners of the modules should be flat to assure proper fit. Install the modules snugly. Be careful not to over-tighten the installation.
9. If experiencing problems placing the tiles, rub a damp rag over the back of the tile prior to setting in place on the tape. This will allow for shifting of the tile to aid in proper alignment.
10. Use an Orcon steel wheel seam roller or similar roller to blend and enhance the seams.
11. Roll the completed installation with a 75-pound roller.
12. The loop pile modules will have some yarn blossoming at the edges. This is inherent to this type of construction. The face yarn may require occasional trimming.

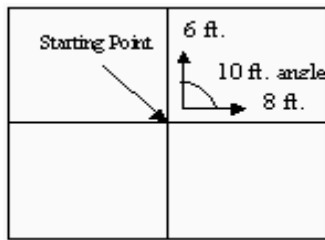


Figure 1

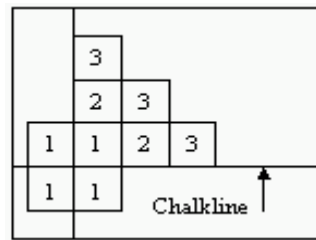


Figure 2

## Additional Information

**NOTE:** Neglecting to follow these instructions may result in installation failure.

- **Observe dye lot guidelines. Never indiscriminately mix dye lots.**
- Each pallet will be identified by a Pallet Sequence Number. Every effort should be made to minimize sequence separation of pallet numbers in a given area.
- For trench headers, apply a narrow strip of tape along each side of all trench headers. This will prevent movement in the installation while gaining access to the headers.
- Modules are easily removed from the floor. When reinstalling modules, replace them in their original position and pile direction.
- For installations over flat cable, spread the tape over the metal shields covering flat wire cable in accordance with the cable manufacturers' recommendations.